



Comparison of 102cm breasts sizes

102CM-S



102CM-M



102CM-L



102CM-XL (可做TPE版本 TPE version is available.)



嘿~看这里，柔软度不同也会造成胸围和胸部的下垂程度微微不同哦~

Please Note: Different softness will cause the degree of breasts sagging and bust to be different.



Comparison of 125cm breasts sizes

125CM (可做TPE版本 TPE version is available.)



嘿~看这里，柔软度不同也会造成胸围和胸部的下垂程度微微不同哦~

Please Note: Different softness will cause the degree of breasts sagging and bust to be different.









Comparison of 148cm breasts sizes

148CM-S

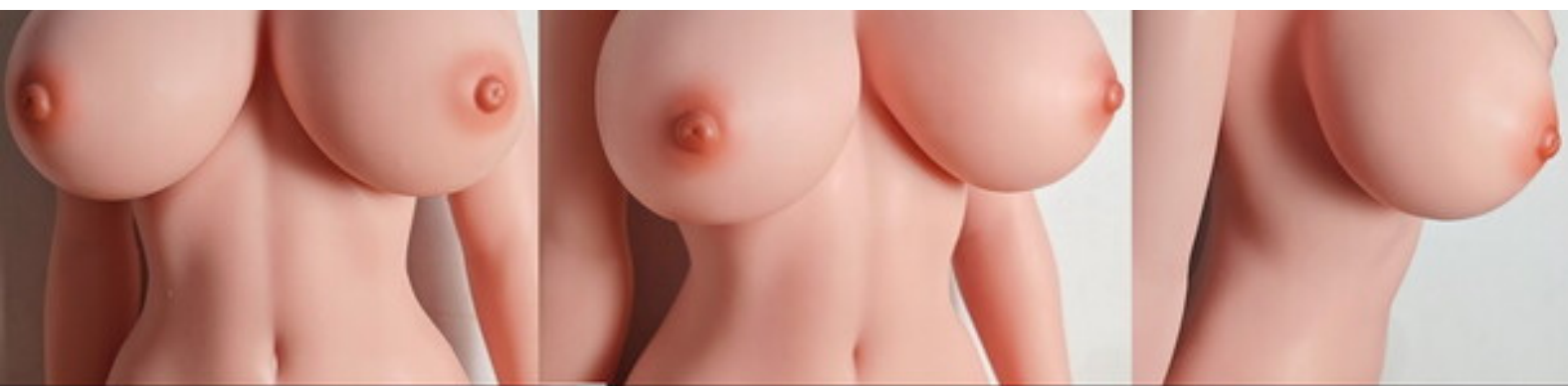


148CM-M



148CM-L (可做TPE版本 TPE version is available.)





嘿~看这里，柔软度不同也会造成胸围和胸部的下垂程度微微不同哦~

Please Note: Different softness will cause the degree of breasts sagging and bust to be different.

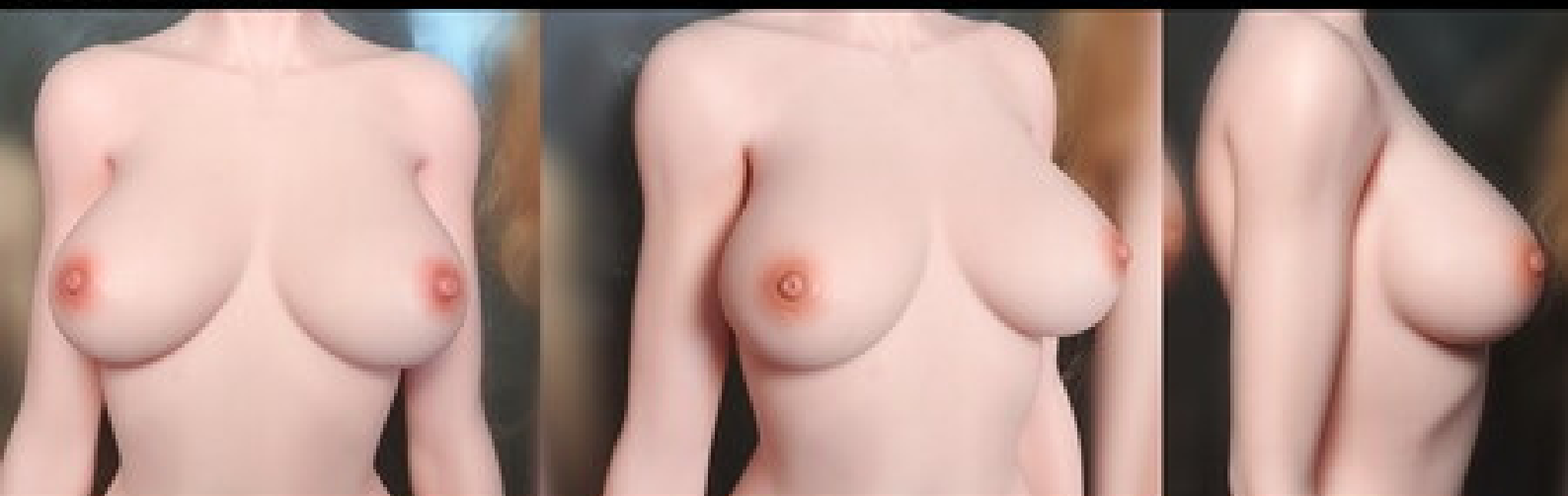


Comparison of 150cm breasts sizes

150CM-S



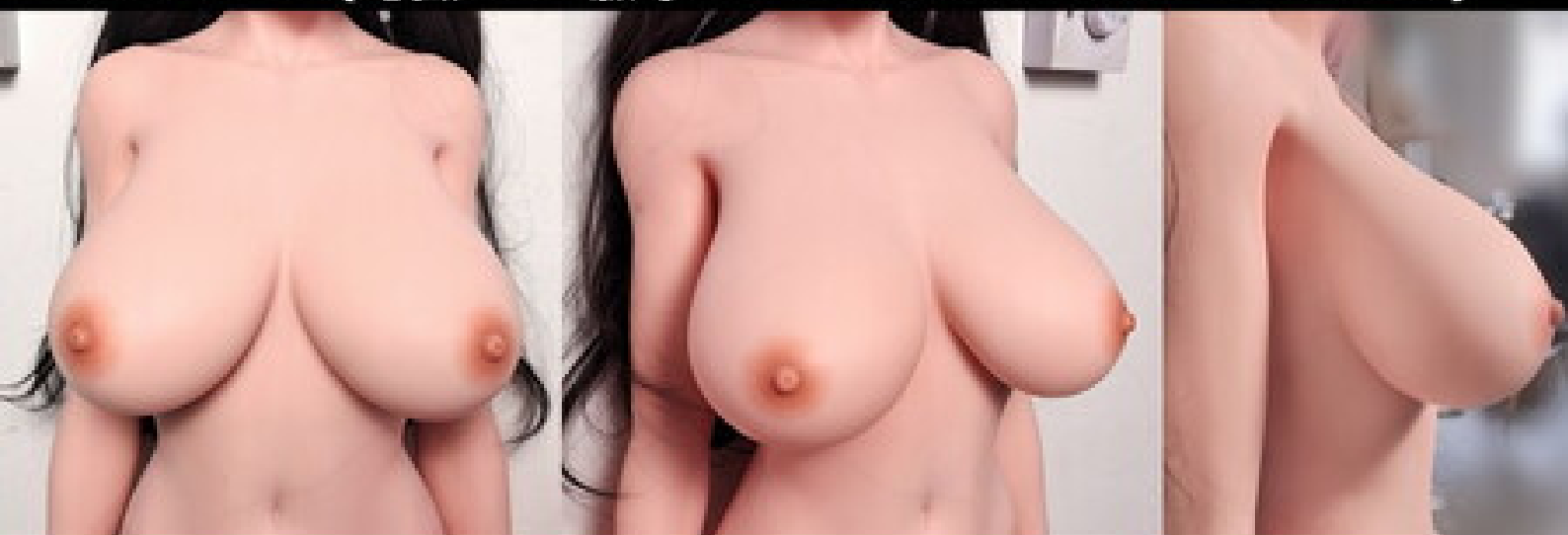
150CM-M



150CM-L



150CM-XL(可做TPE版本 TPE version is available.)



150CM-XXL



嘿~看这里，柔软度不同也会造成胸围和胸部的下垂程度微微不同哦~

Please Note: Different softness will cause the degree of breasts sagging and bust to be different.



Comparison of 160cm breasts sizes

160CM-S



160CM-M (可做TPE版本 TPE version is available.)



160CM-L



160CM-3



嘿~看这里，柔软度不同也会造成胸围和胸部的下垂程度微微不同哦~

Please Note: Different softness will cause the degree of breasts sagging and bust to be different.



Comparison of 165cm breasts sizes

165CM-S



165CM-M



165CM-L



165CM-XL(可做TPE版本 TPE version is available.)



165CM-XXL



嘿~看这里，柔软度不同也会造成胸围和胸部的下垂程度微微不同哦~

Please Note: Different softness will cause the degree of breasts sagging and bust to be different.



The difference between the regular version and the upgraded version of TPE dolls.

基础版 (无涂装版)
Regular version



升级版 (涂装版)
Upgraded version







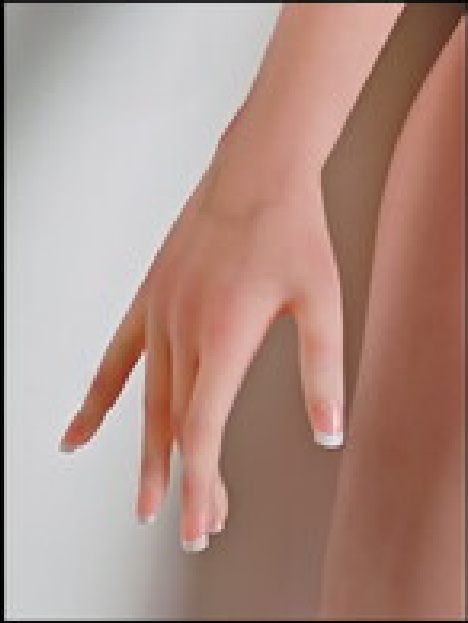
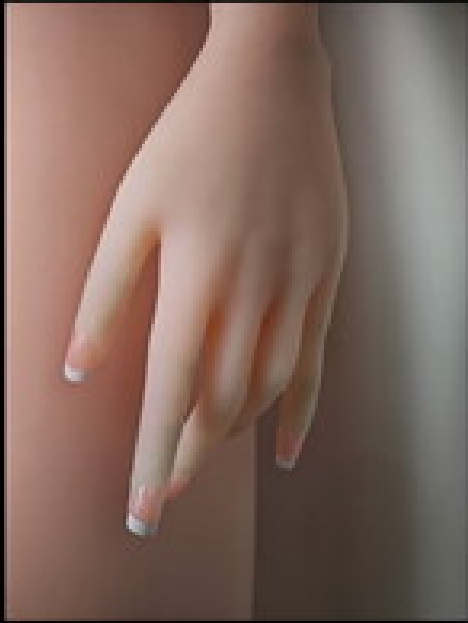
The difference between the regular version and the upgraded version of TPE dolls.

基础版 (无涂装版)
Regular version



升级版 (涂装版)
Upgraded version







Elsa Babe



Product Maintenance

Step 1 : Water cleaning

Rinse with clean water to wash away surface dirt. Note: Only use cold or warm water within 38 degrees Celsius to prevent affecting product lifespan and elasticity.

Step 2 : Deep cleaning

After rinsing with clean water, apply the product surface with shower gel or hand soap. After moderately rubbing and cleaning, rinse with clean water.

Step 3 : Wipe clean

Wipe the water traces on the surface of the product with a dry cloth, and it needs to be completely wiped clean and dry.

Step 4: Apply baby powder

After cleaning and drying the product, apply the baby powder all over the product.

Attentions

- 1. Do not use sharp objects to scratch the product, and do not pinch the surface skin too hard to avoid damage.
- 2. The product cannot be placed in the sunlight environment for a long time to avoid product aging and affect product's lifespan.
- 3. Avoid squeezing and stretching the product for a long time to avoid dents or cracks.
- 4. For clothing and accessories worn on the doll for a long time, please choose non-printing materials such as white cotton. The dyeing of the doll skin caused printing and dyeing materials is an irreversible reaction and cannot be returned.
- 5. Except for major accidents, doll can be repaired twice a year for free and free makeup once a year during one year warranty period. After the warranty period, depending on the product conditions, pay for repairs. (Note: All shipping cost within or outside the product warranty is at your own expense.)
- 6. The doll's wrist is relatively fragile and is not suitable for long-term kneeling or taking heavy objects. Please keep lying or sitting when changing the doll's posture. If you want to let the lying doll sit up, please rotate the lower body joints instead of the upper body joints.

Skeleton Activity Range

Forearm Bending

Shoulder Y-Axis Rotating

Forearm Twisting

Head Turning Left & Right

Head Tilting Left & Right

Head Tilting Back & Forward

Waist Bending Forward & Backward

Waist Rotating

Shoulder Z-Axis Rotating
Shoulder X-Axis Rotating

Waist Side-Bending

Wrist Twisting

Moving wrist Up & Down

Head Installation Instructions

102CM doll: Goose neck + Ball Jointed Socket

The neck is consist of the goose neck tube with a ball jointed socket top. Head tightness can be adjusted according to personal preference.

Find the adjustment hole on the ball jointed socket, use the hex allen wrench to align the adjustment hole and rotate clockwise or counterclockwise to adjust the neck tightness. (The hex allen wrench will come with the doll.)

102CM

165CM

165CM doll: Hinged Neck + Straight Plug
Insert the plug of the head connector into socket above the neck, press hard to complete the installation.



Foot Rotating



Thigh Twisting

Calf Twisting



Thigh Bending

Calf Bending

Instructions for use of hip joints and lift of the entire leg

1. Since the hip joints of the doll are made of ball joints, please follow the instructions for use of the leg joints.
2. The ball joints of the hip can lift the entire leg forward, backwards and sideways.
3. It is recommended that when lifting the entire leg forward or backward, please do not keep the leg in an open posture during operation to ensure the durability of the ball joint of the hip.
4. To lift the whole leg forward or backward and spread it, first lift the whole leg forward or backward with the legs close together, and then spread the leg outward.
5. If the whole leg cannot be lifted forward or backward, please restore the legs to the straight and close position, open the legs to both sides, and then close the legs again. This will restore the hip ball joint to the original status.